

PROPOSED TOOL FEATURES

HYDRAULIC TENSIONER IS FITTED WITH QUICK RELEASE HYDRAULIC CONNECTIONS, TO ENABLE QUICK AND SIMPLE HOSE CONNECTION.

HYDRAULIC TENSIONER IS FITTED WITH A DEVICE TO DIRECT OIL AWAY FROM THE OPERATOR, SHOULD THE PISTON BE OVER-STROKED.

HYDRAULIC TENSIONER IS FITTED WITH HIGH QUALITY, SELF-ENERGISING SEALS. NO SEAL ADJUSTMENT IS NECESSARY

HYDRAULIC TENSIONER IS COATED FOR ENHANCED CORROSION PROTECTION

TECHNICAL SPECIFICATION

- MAX WORKING PRESSURE 1500 BAR
- MAX TEST PRESSURE 1600 BAR
- TOTAL OIL CAPACITY 1500 CUBIC cm
- EFFECTIVE OIL CAPACITY 1200 CUBIC cm
- DISPLACEMENT/PUMP STROKE (LOW PRESSURE) 20 CUBIC cm
- DISPLACEMENT/PUMP STROKE (HIGH PRESSURE) 1.0 CUBIC cm
- PUMPING EFFORT 370N
- WEIGHT 11.5Kg

RECOMMENDED OIL
HYDRAULIC OIL, VISCOSITY CLASS ISO 32

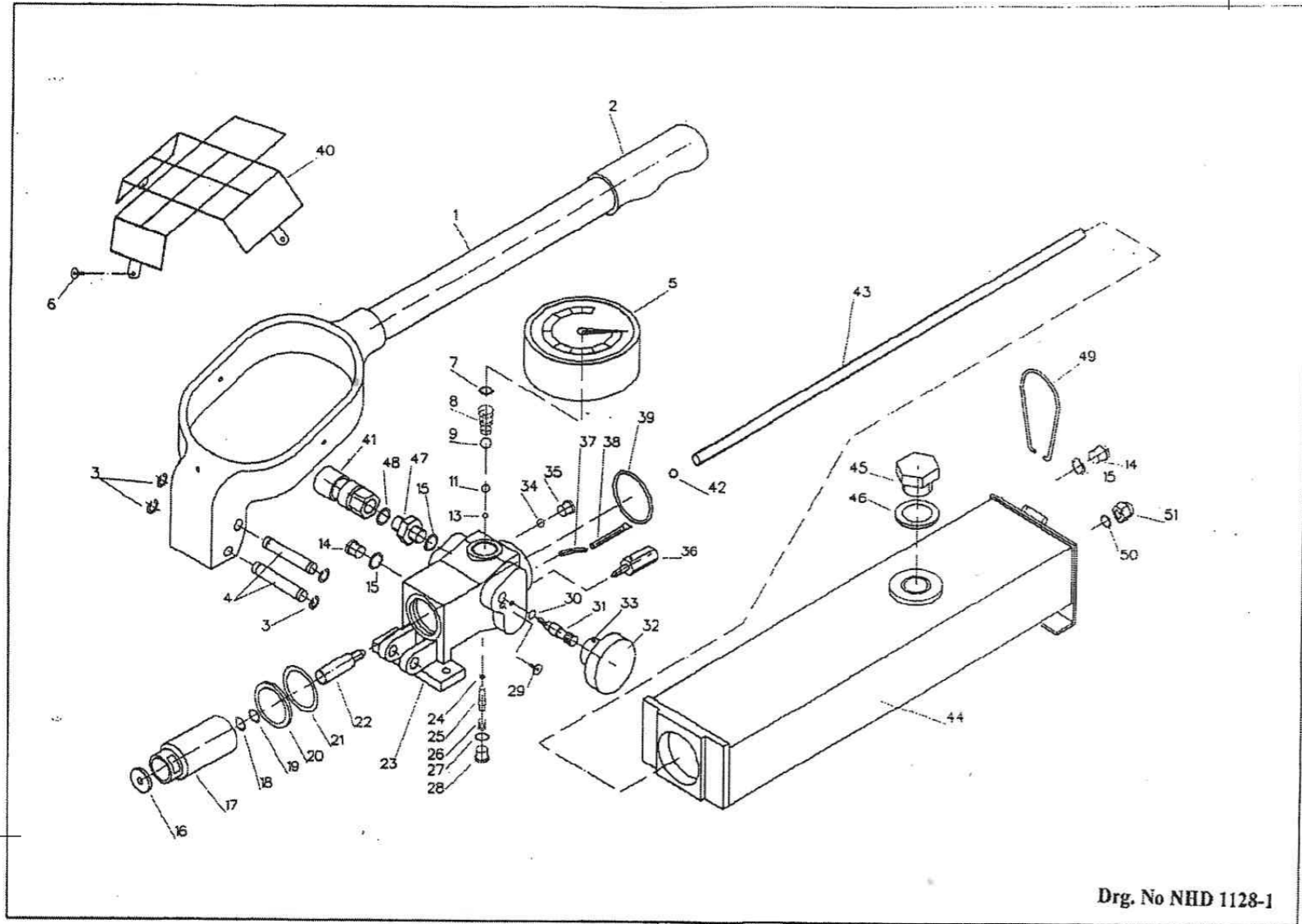
| | | |
|-------|------------|----------|
| 10961 | 26/08/2015 | D |
| 10576 | 11/03/2015 | C |
| 10488 | 20/01/2015 | B |
| DMR | DATE | REVISION |

DRAWING MODIFICATION HISTORY

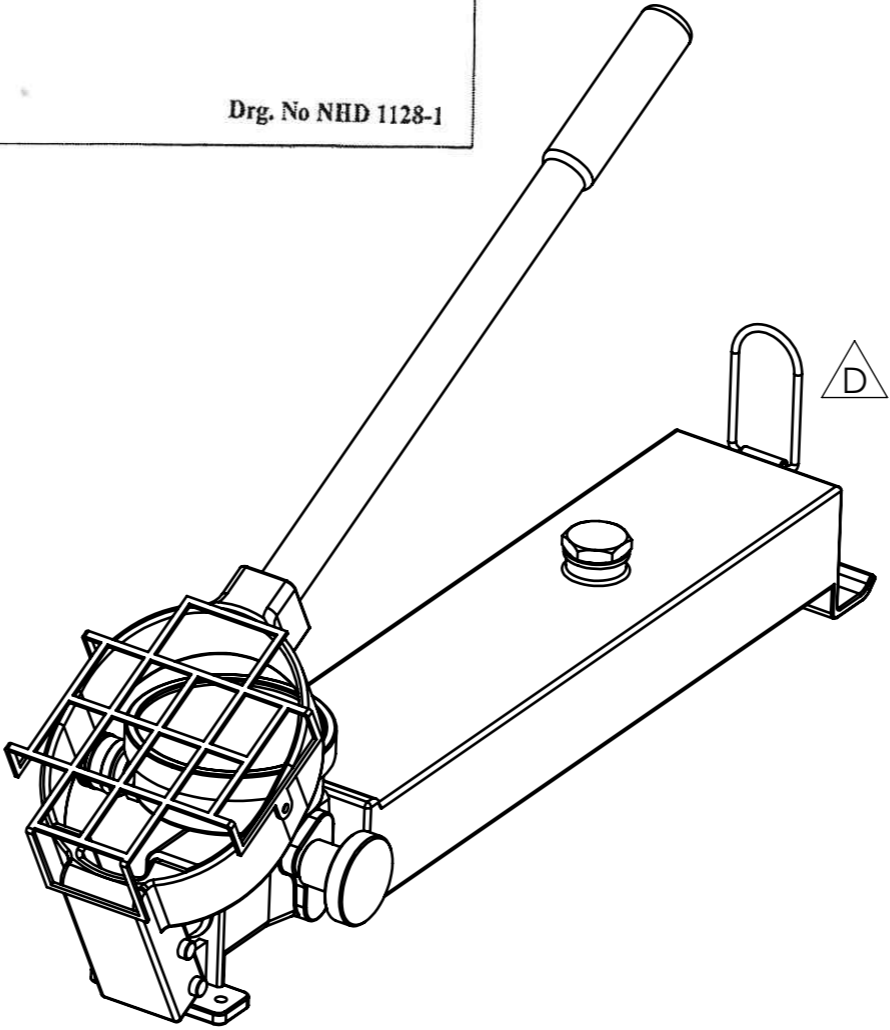
THIS DRAWING IS CONFIDENTIAL. IT IS THE SOLE AND EXCLUSIVE PROPERTY OF TENTE LTD AND IS SUBJECT TO RETURN UPON REQUEST. IT MAY NOT BE COPIED, DUPLICATED, DISCLOSED, TRANSMITTED OR COMMUNICATED TO A THIRD PARTY IN ANY MANNER, IN WHOLE OR ANY PART THEREOF, WITHOUT THE PRIOR WRITTEN CONSENT OF THE OWNER; NOR MAY IT BE USED FOR ANY PURPOSES OTHER THAN IN RELATION TO THE SINGLE CIRCUMSTANCE IN CONNECTION WITH WHICH IT HAS BEEN SUPPLIED. FOR COPYRIGHT PURPOSES THIS IS DEEMED TO APPLY EQUALLY TO THE DOCUMENT AND TO ANY DESIGNS, CALCULATIONS, RESULTS OR OTHER CONCEPTUAL MATTER DEPICTED THEREIN

© Tentec Limited. All rights reserved

| | | |
|--|-------------------|--|
| UNLESS OTHERWISE STATED: ALL DIMENSIONS IN MILLIMETERS ALL UNSTATED CHAMFERS 1 x 45° SURFACE FINISH 3.2 µm REMOVE SHARP EDGES IF IN DOUBT ASK | | Tentec [®] www.tentec.net |
| DO NOT SCALE DRAWING | SCALE 1:2.5 | DRAWING TITLE 1500BAR HAND PUMP |
| GENERAL TOLERANCES LINEAR ± 0.125 ANGULAR ± 1/2° | DRAWN BY GJH | DATE 26/08/2015 |
| WEIGHT (kg) 10.00 | CHECKED BY JMG | DATE 26/08/2015 |
| | | DRAWING No. HTT.2065.000 D |



Drg. No NHD 1128-1



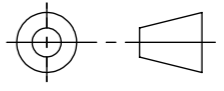
- A - HANDLE KIT - 602477**
- B - REPAIR/SEAL KIT - 602097**
- C - PISTON KIT - 602446**
- D - RELEASE KIT - 602441**

| It. No. | Description | Tentec Part No. | Qty. | Part No. | Finish | Weight |
|---------|---------------|-----------------|------|-------------|-------------|--------|
| 51 | NUT | HTT.2065.051 | 1 | B | AS SUPPLIED | |
| 50 | PACKING | HTT.2065.050 | 1 | B | AS SUPPLIED | |
| 49 | YOKE | HTT.2065.049 | 1 | 602177 | AS SUPPLIED | |
| 48 | PACKING | HTT.2065.048 | 1 | B OR 601521 | AS SUPPLIED | |
| 47 | ADAPTOR | HTT.2065.047 | 1 | 601583 | AS SUPPLIED | |
| 46 | PACKING | HTT.2065.046 | 1 | B OR 16621 | AS SUPPLIED | |
| 45 | PLUG | HTT.2065.045 | 1 | 601341 | AS SUPPLIED | |
| 44 | OIL TANK | HTT.2065.044 | 1 | 602095 | AS SUPPLIED | |
| 43 | ROD | HTT.2065.043 | 1 | 602094 | AS SUPPLIED | |
| 42 | BALL | HTT.2065.042 | 1 | B | AS SUPPLIED | |
| 41 | COUPLING | HTT.2065.041 | 1 | 601020 | AS SUPPLIED | |
| 40 | MESH | HTT.2065.040 | 1 | A OR 602073 | AS SUPPLIED | |
| 39 | O-RING | HTT.2065.039 | 1 | B | AS SUPPLIED | |
| 38 | FILTER | HTT.2065.038 | 1 | B | AS SUPPLIED | |
| 37 | SUCTION PIPE | HTT.2065.037 | 1 | B | AS SUPPLIED | |
| 36 | RELIEF VALVE | HTT.2065.036 | 1 | 602090 | AS SUPPLIED | |
| 35 | PLUG | HTT.2065.035 | 1 | B | AS SUPPLIED | |
| 34 | BALL | HTT.2065.034 | 1 | B | AS SUPPLIED | |
| 33 | SCREW | HTT.2065.033 | 1 | D OR 602103 | AS SUPPLIED | |
| 32 | HAND WHEEL | HTT.2065.032 | 1 | D OR 602102 | AS SUPPLIED | |
| 31 | RELEASE SCREW | HTT.2065.031 | 1 | D | AS SUPPLIED | |
| 30 | O-RING | HTT.2065.030 | 1 | B OR D | AS SUPPLIED | |
| 29 | SCREW | HTT.2065.029 | 1 | D OR 602084 | AS SUPPLIED | |
| 28 | PLUG | HTT.2065.028 | 1 | B | AS SUPPLIED | |
| 27 | PACKING | HTT.2065.027 | 1 | B | AS SUPPLIED | |
| 26 | SPRING | HTT.2065.026 | 1 | B | AS SUPPLIED | |
| 25 | PISTON | HTT.2065.025 | 1 | B | AS SUPPLIED | |
| 24 | O-RING | HTT.2065.024 | 1 | B | AS SUPPLIED | |
| 23 | HOUSING | HTT.2065.023 | 1 | 602081 | AS SUPPLIED | |
| 22 | PISTON | HTT.2065.022 | 1 | C | AS SUPPLIED | |
| 21 | O-RING | HTT.2065.021 | 1 | B OR C | AS SUPPLIED | |
| 20 | WIPER | HTT.2065.020 | 1 | B | AS SUPPLIED | |
| 19 | SUPPORT RING | HTT.2065.019 | 1 | B OR C | AS SUPPLIED | |
| 18 | O-RING | HTT.2065.018 | 1 | B OR C | AS SUPPLIED | |
| 17 | PISTON | HTT.2065.017 | 1 | C | AS SUPPLIED | |
| 16 | WASHER | HTT.2065.016 | 1 | B | AS SUPPLIED | |
| 15 | PACKING | HTT.2065.015 | 2 | B | AS SUPPLIED | |
| 14 | PLUG | HTT.2065.014 | 1 | B | AS SUPPLIED | |
| 13 | BALL | HTT.2065.013 | 1 | B | AS SUPPLIED | |
| 12 | | | | | | |
| 11 | BALL | HTT.2065.011 | 1 | B | AS SUPPLIED | |
| 10 | | | | | | |
| 9 | BALL | HTT.2065.009 | 1 | B | AS SUPPLIED | |
| 8 | SPRING | HTT.2065.008 | 1 | B | AS SUPPLIED | |
| 7 | O-RING | HTT.2065.007 | 1 | B | AS SUPPLIED | |
| 6 | SCREW | HTT.2065.006 | 3 | 602072 | AS SUPPLIED | |
| 5 | GAUGE | HTT.2065.005 | 1 | 602067 | AS SUPPLIED | |
| 4 | AXLE | HTT.2065.004 | 2 | A | AS SUPPLIED | |
| 3 | TRACK RING | HTT.2065.003 | 4 | A OR B | AS SUPPLIED | |
| 2 | GRIP | HTT.2065.002 | 1 | A | AS SUPPLIED | |
| 1 | HANDLE | HTT.2065.001 | 1 | A | AS SUPPLIED | |

THIS DRAWING IS CONFIDENTIAL. IT IS THE SOLE AND EXCLUSIVE PROPERTY OF TENTE LTD AND IS SUBJECT TO RETURN UPON REQUEST. IT MAY NOT BE COPIED, DUPLICATED, DISCLOSED, TRANSMITTED OR COMMUNICATED TO A THIRD PARTY IN ANY MANNER, IN WHOLE OR ANY PART THEREOF, WITHOUT THE PRIOR WRITTEN CONSENT OF THE OWNER; NOR MAY IT BE USED FOR ANY PURPOSES OTHER THAN IN RELATION TO THE SINGLE CIRCUMSTANCE IN CONNECTION WITH WHICH IT HAS BEEN SUPPLIED. FOR COPYRIGHT PURPOSES THIS IS DEEMED TO APPLY EQUALLY TO THE DOCUMENT AND TO ANY DESIGNS, CALCULATIONS, RESULTS OR OTHER CONCEPTUAL MATTER DEPICTED THEREIN

© Tentec Limited. All rights reserved

UNLESS OTHERWISE STATED:
ALL DIMENSIONS IN MILLIMETERS
ALL UNSTATED CHAMFERS 1 x 45°
SURFACE FINISH 3.2 µm
REMOVE SHARP EDGES
IF IN DOUBT ASK



Tentec[®]
www.tentec.net

DO NOT SCALE DRAWING

SCALE
1:4

DRAWING TITLE
1500BAR HAND PUMP

GENERAL TOLERANCES
LINEAR ± 0.125
ANGULAR ± 1/2°

DRAWN BY
GJH
DATE
26/08/2015

DRAWING No.
HTT.2065.000 D

WEIGHT (kg)
10.00

CHECKED BY
JMG
DATE
26/08/2015